



11 Richmond Close

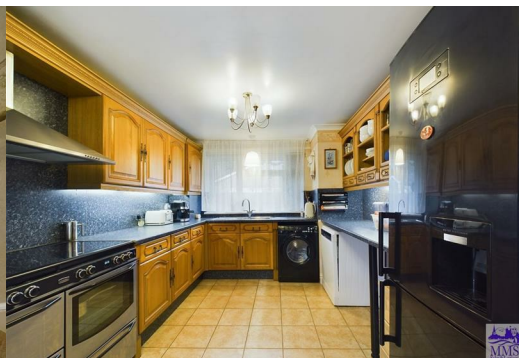
, Lordswood, Chatham, ME5 8YH

Offers Around £300,000



VIRTUAL TOUR AVAILABLE

Offered to the sales market with NO FORWARD CHAIN is this 904.17 square feet, two-storey corner plot property which presents an ideal opportunity for a cozy and comfortable living space. The ground floor boasts a spacious living room and a fully-equipped kitchen/diner that includes a space for a double stove and offers access to the rear garden. Travel upstairs to find an intricately planned first floor featuring three impressive size bedrooms, a bathroom full of character and comes complete with a bath tub to relax in. The outside space is made up of mostly lawn and patio with a sleek glass pergola to ensure you can enjoy the garden in many weathers. This residence marries practicality and comfort, providing ample room for relaxation and work, potentially making it an ideal choice for both families and young professionals. Lordswood is a southern suburb of Chatham, Kent, located approximately 3 miles south of Chatham town centre and possesses pockets of woodland with good access routes to the motorway. COUNCIL TAX BAND B



entrance hall
 lounge
 kitchen/diner
 stairs/landing
 bedroom
 bedroom
 bedroom
 bathroom
 rear garden
 front garden

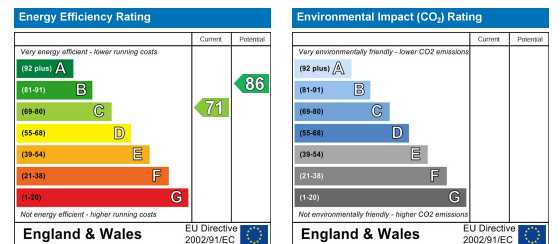
Area Map



Floor Plans



Energy Efficiency Graph



These particulars, whilst believed to be accurate are set out as a general outline only for guidance and do not constitute any part of an offer or contract. Intending purchasers should not rely on them as statements of representation of fact, but must satisfy themselves by inspection or otherwise as to their accuracy. No person in this firm's employment has the authority to make or give any representation or warranty in respect of the property.